

OxBox functionality

OxBox allows you great flexibility in planning and teaching your course. You can add your own resources to the contents, and you can customise the majority of those provided. You can create your own plans, or you can edit those already provided, to best suit your classes. You can even create your own interactive assessments to suit individual pupils.

Resources section

For each spread in the *GCSE Geography OCR A* students' book, your OxBox will provide:

- A PowerPoint® presentation containing every photo, map and artwork from that spread.
- An interactive activity – for whiteboard or individual use – based on a section of the topic. The activities are fairly short, and incorporate a variety of activity types. They are ideal as starters or plenaries, or to refocus attention during the lesson.

gcse OCR A
geography

Touching the void

Activity 1 of 2

Joe and Simon's route up and down Siula Grande

Siula Grande - 6,344m

4

Plot the places on Joe and Simon's route up Siula Grande.

Key

1	basecamp
2	glacier foot
3	snow hole
4	summit
5	the accident
6	crevasse

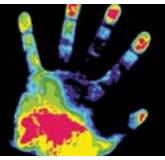
© Oxford University Press 2009

Next

◀ Interactive activity to accompany section 3.2: Touching the void.

- A copy of the student activities from the spread in a Word document – easily editable for personalised learning.

For a number of spreads, additional resource sheets are provided to accompany a particular question, saving you preparation time.



Planning section

For each main teaching spread of the *GCSE Geography OCR A* students' book, your OxBox will provide a customisable lesson plan. This lesson plan contains:

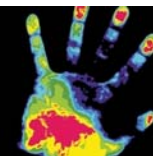
- The relevant enquiry question from the OCR A specification, and a set of lesson outcomes.
- Some starter activity suggestions.
- An activity section with all of the relevant resources attached. (See Lesson Player below.)
- Some suggestions for plenaries.

Lesson player

From any lesson plan you can choose to launch the attached resources, using the OxBox lesson player. This opens a toolbar on your whiteboard, allowing you to open your resources in any sequence you choose, without searching for them in your folders.

Also provided on your OxBox:

- A course overview, matching the contents of the *GCSE Geography OCR A* students' book against the OCR A specification.
- A chapter plan for each chapter in the students' book, detailing the specification enquiry questions, and the associated student outcomes.



Assessment section

A variety of assessment opportunities are provided on your OxBox:

Students' book	Interactive formative assessment	Interactive summative assessment	Practice exam-style questions	Self-assessment form
	On-screen, auto-marked assessments, with automatic feedback, and confidence level report	On-screen auto-marked assessment. Class results automatically aggregated with a number of test reports available	Exam-style questions, at higher and foundation tier, with mark scheme and reflection activity	Opportunity for self-assessment, peer assessment and teacher review
Unit 1: Extreme environments				
1 – Introducing extreme environments	✓	<i>Introductory chapter therefore no formal assessment</i>		✓
2 – Desert environment	✓	✓	✓	✓
3 – Mountain environment	✓	✓	✓	✓
4 – Polar environment	✓	✓	✓	✓
Unit 2: You as a global citizen				
5 – Investigate the impact of our decisions as consumers	<i>Controlled assessment unit</i>			✓
6 – Investigate a retail area				✓
Unit 3: Similarities and differences				
7 – Nottingham – my place in the UK	<i>Studies will vary according to centre location</i>		✓	✓
8 – Mumbai – a place outside the UK	✓	✓	✓	✓
Unit 4: Issues in our fast-changing world				
9 – Population change	✓	✓	✓	✓
10 – Our changing planet	✓	✓	✓	✓
11 – Trade, aid, and superpowers	✓	✓	✓	✓
12 – The challenge of planning	✓	✓	✓	✓