

Beware: meat-eaters!

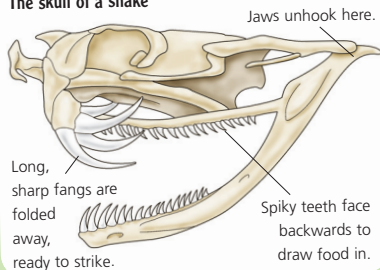
Case study

The snake

Snakes have remarkable jaws and teeth. Some snakes kill their prey with poison, which they inject through teeth called fangs. The fangs are hollow, sharp and long. They fold away inside the snake's mouth but spring forward when it attacks.



The skull of a snake



A snake's jaws help it to eat meals much bigger than itself. The upper and lower jaws unhook at the sides, giving the snake extra room. It can stretch its mouth right over its prey and, inch by inch, swallow it whole.

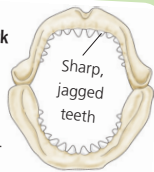
Case study

The shark



The Great White shark has massive jaws and several rows of sharp, jagged teeth. With one bite, it can cut a seal in half. Sharks have no molars to chew their food. Instead, they grip their prey tightly and shake it wildly, while their teeth 'saw' the meat into bits.

The skull of a Great White shark



Rows of new teeth replace teeth that are lost.



Tooth Talk

A shark loses teeth in every attack, but new ones move forward to fill the gaps. Some sharks get through thousands of teeth in their lifetime.



Weasel

Dog

These animals are both meat-eaters.