

What is controlled assessment?

Controlled assessment is a way of assessing your work outside of an examination format. In controlled assessment units, you will have to complete a set of tasks set out by the exam board. You will do so in a supervised environment (possibly your classroom) and your work will be marked by your teacher and moderated by OCR.

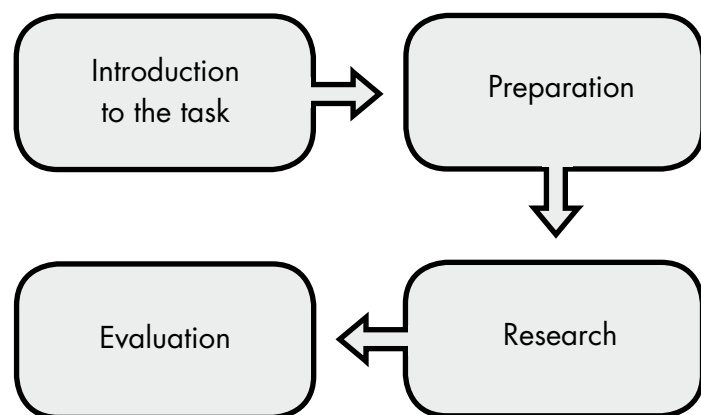
For GCSE English, the controlled assessment will make up 60% of your total marks.

The stages of controlled assessment

The kinds of tasks you will be required to complete include:

- Written tasks requiring comment, criticism and analysis
- Linked writing tasks
- Speaking and Listening tasks

Controlled assessment takes place in a series of four stages:



1 Preparing the task

Once you have selected your task from the list provided by OCR, you will spend some time in the preparation and research stages. Your teacher will be able to discuss the task with you, but can only give you general advice. Make sure that:

- you plan and organise your ideas
- you do not write an essay and learn it off by heart
- you ensure your research sources are correct.

2 The assessment task

You will write your assessment under formal supervision. Remember to:

- do everything the task asks for
- write in standard English, using proper sentences and paragraphs
- keep an eye on the time, leaving some at the end for checking your work
- carefully acknowledge all sources and quotations.

3 Checking your work

Check your work several times, looking at different features each time.

- Is your spelling and punctuation correct?
- Have you made any grammatical errors?
- Have you done everything required by the task?

4 Aiming for A*

To achieve a top grade, you must be able to:

- structure your answer well and write clearly and fluently
- make few errors in grammar, punctuation or spelling and use vocabulary appropriately
- show that you have an overview of each text or theme